



HALLAM
PRIMARY
SCHOOL

Hallam Happenings

16 May 2024

Term 2 #3

<http://www.hallam-ps.vic.edu.au/>



CCTV
in
operation



SUNSMART

eSmart
Schools

Hallam Primary School's learning and teaching programs support and promote the principles and practice of Australian democracy, including a commitment to elected government, the rule of law, equal rights for all before the law, freedom of religion, freedom of speech and association and the values of openness and tolerance.

Hallam Primary School has a zero tolerance approach to child abuse.

We acknowledge the Traditional Owners of the land where we work and live, the Bunurong People of the Kulin nation, and pay our respects to Elders past and present.

2025 Prep Enrolment at Hallam PS

To start Prep at Hallam PS in 2025, **your child will need to turn 5 years old by 30 April 2025**. Schooling is compulsory for children who have turned 6 years old.

What you need to do:

Use [Find My School](#) to locate your designated neighbourhood school (referred to as your local school) and other nearby government schools.

1. Contact the school/s to book a school tour or to learn more about the school and the enrolment application process.

2. Request an Application/Enrolment form from the school or download the [Foundation \(Prep\) Enrolment Information Pack for Parents and Carers \(PDF, 1.5 MB\)](#)

3. Submit your Application/Enrolment for Foundation (Prep) by Friday 26 July 2024.

4. You will be notified of the outcome of your application between Monday 29 July and Friday 9 August 2024. If you receive an enrolment offer, you should accept the offer by Friday 23 August 2024.

5. Take part in information and transition sessions during Term 4, 2024.

6. Students will start Foundation (Prep) at Hallam PS from Thursday 30 January 2025.

NOTE: Enrolment applications submitted after 26 July 2024 will be processed by Hallam PS as they are received, in accordance with the Department of Education's Placement Policy.

Traffic Safety-Hallam PS Students & Families

The safe arrival and departure of Hallam PS students is very important to us.

- Please leave home in plenty of time so that students can arrive at school between 8:45-8:55am (unless coming earlier for Breakfast Club at 8:30am).
- Please be patient if arriving during peak hour periods

SCHOOL CROSSING flags are displayed: Parking within 20 metres before a designated school crossing or 10 metres after is illegal.

ACCESSIBLE PARKING: Without a permit, vehicles are not permitted to park in these spaces.

An Accessible Parking Permit:

- can only be displayed when the vehicle is transporting the individual who the permit was issued to
- must be clearly displayed so that the permit number and expiry date are visible from outside the vehicle.

There are **only two spaces** along Harmer Road. Please remember:

- we have **STUDENTS** who are the individual for whom the permit has been issued
- refrain from parking in the middle of the two spaces



NO U TURN: The Harmer Road frontage of Hallam PS is regulated by No U Turn signs.

2024 Mid-year Student Reports

Your child's mid-year report will be available through Compass at the end of this term. If you are still not logging in to Compass, please speak with staff in Administration to ask for assistance with this.

Reports should be reviewed with your child and saved/printed for future reference.

Julie Macfarlane



OPEN AFTERNOON

WEDNESDAY 12 JUNE

3.30PM—4.30PM

FAMILIES ARE WARMLY
INVITED TO COME ALONG TO HALLAM PS AND
HAVE A LOOK AROUND THE SCHOOL.



CHECK OUT THE ENGAGING
CLASSROOMS AND
THE AMAZING ART AND
LEARNING OUR
ENTHUSIASTIC
STUDENTS HAVE
COMPLETED.

VISIT THE STEM CENTRE (ART AND STEM),
PERFORMANCE ARTS, PE AREA,
THE LIBRARY, BREKKIE CLUB, KITCHEN
GARDEN AREAS...

Students give your parents/
carers a personal guided tour
of the school and celebrate all
your hard work.



Harold's Dad Comes to Hallam PS!!

On Wednesday 8th May, Harold's dad came to a very special school assembly to find out what his son had been teaching our students during their recent Life Ed classes. Six confident students stood up in front of the whole school and shared what they learned about when they participated in these sessions. They also read out the 'Commitment to Change' goal they had written to explain what they were planning on doing to make a positive change in the future.



Amongst other things, the Preps learned about the importance of personal hygiene, getting a good night's sleep and choosing foods for a healthy, balanced diet. The 1/2s learned about the benefits of physical activity, drinking lots of water and what our bodies need to be healthy. The 3/4s found out how the digestive, respiratory and circulatory systems work and what we can do to keep them working properly. The 5/6s learned more about the dangers of smoking and why vapes are so bad for our bodies.





SCHOOL BREAKFAST CLUBS



A Victorian Government initiative
in partnership with Foodbank

**FREE!! EVERY STUDENT WELCOME!
MONDAY—FRIDAY 8.30AM—8.45 AM**

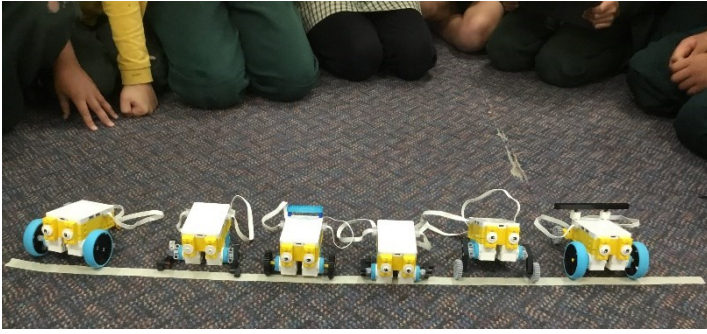
Marvellous Foodbank provide us with goodies for our Brekkie Club ... bread for toast, honey, vegemite, spaghetti, baked beans, a variety of cereal, fruit, milk, etc...

School ensures we have Milo, butter/margarine.... jam from our Kitchen Garden and treats every so often (ANZAC biscuits, croissants, hot cross buns etc)... Our staff help Ms Charlotte distribute brekkie, along with our super student helpers... Thank you to all involved...

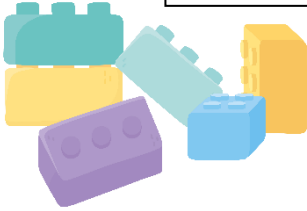
**Families... if you would appreciate a HOME FOOD PACK from Foodbank, please contact the office on 9703 1536, and we will arrange a box for you...(there may be a few days to wait if we do not have packs on site). Please give your name and your child's name.

** You will need to come to HPS to pick it up, as they are too heavy for students to carry home.

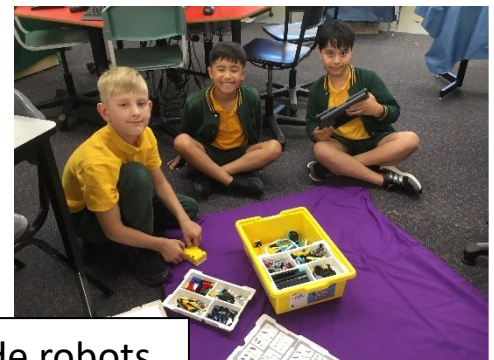
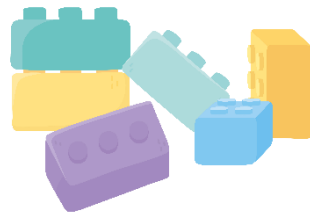
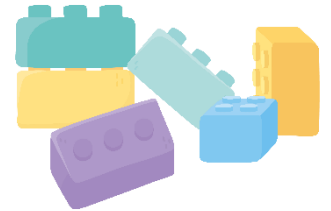




This semester in Lego Club, students have learnt the basics of using the Lego Prime kits. Students learnt how to use the light matrix, motor, colour sensor, distance sensor, force sensor and the gyro sensors.



LEGO CLUB



This term, students will build and code robots to compete in our Hallam Robo Comp at the end of Term 2.

HPS Staff had a special morning tea on Wednesday to celebrate Education Support Week... where we thank our wonderful ES staff for assisting around the school in so many ways...

If you see one of our ES... please say hi and THANK THEM for the terrific job they do to support ALL students and staff at Hallam PS.

Brekkie Club. Library. Interpreting. Play group. Kitchen/Garden. Administration. Technology. Intervention programs. Lunchtime programs. Excursions. Sporting events. Classroom aide assistance. SSG meetings. SSR. Fundraisers. Fun events...The list goes on and on..... And on And on.....

Thank you ES!



CASEY 360 BUS

visits Hallam Primary School



The Casey 360 Bus is a mobile information centre for young people that services the City of Casey. This week, the Year 6 students had the opportunity to step aboard the bus to see what it has to offer. The Casey 360 Bus is a place for young adults to talk to Youth Service Workers for guidance and support. Students spent time playing video games on various gaming consoles and had a fantastic time!



Mother's Day Stall and Raffle



Thank you to our wonderful staff and the parents who came along on Friday to help with the Mother's Day Stall.

Congratulations to our Raffle winners.....

1st Prize - Heidi's Mum

2nd Prize - Eva & Lily's Mum

3rd Prize - Ashton & Ariana's Mum

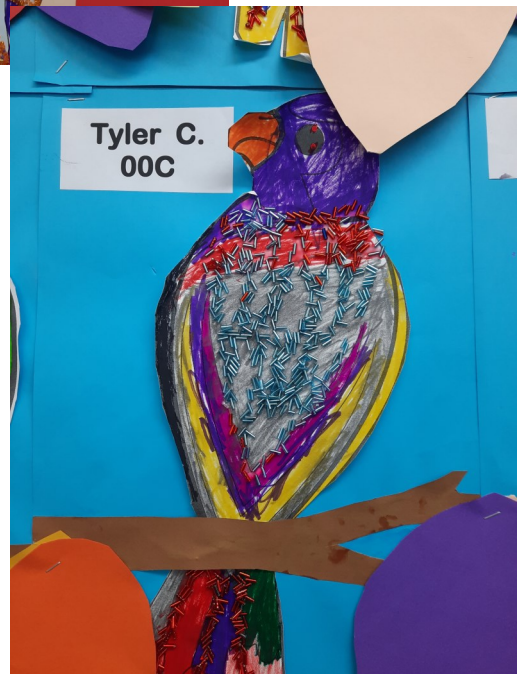
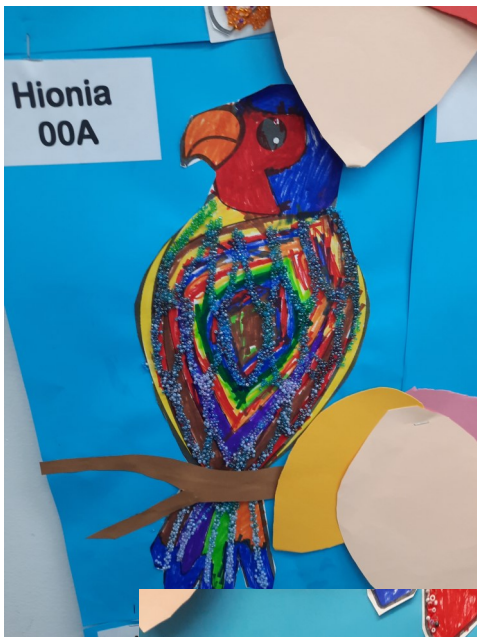
We hope all the Mums, Nans and others had a wonderful day on Sunday!



Artwork from our students... thanks Mrs King!!









DID YOU KNOW?

- o Wearing a helmet when riding a bicycle reduces the risk of head injury by 74%.
- o Head injuries are very common for skateboarders not wearing helmets.
- o Every year in Victoria, about 250 children are hospitalised as a result of scooter accidents, with head injuries common.

CHILDREN AND ADULTS SHOULD WEAR A HELMET AT ALL TIMES WHILE RIDING A BICYCLE, SCOOTER OR SKATEBOARD.

THE SIMPLE HELMET FIT CHECK



Two finger widths above the eyebrows.



Helmet straps must be correctly adjusted with no twists. The straps should form a 'V' shape around the ears.



The buckle fastened and two fingers can fit under chin strap.



If the helmet moves out of position easily it is not correctly fitted – straps are loose or helmet is too big.



ROAD TO ZERO

HELMETS: WHAT YOU NEED TO KNOW



GUIDE FOR PARENTS

ROADTOZERO.VIC.GOV.AU

Set a good example

Children's behaviour is shaped by what their parents/carers do. When it comes to wearing a helmet while riding a bicycle, scooter or skateboard, you need to be a good role model for your own and other children.

Make sure your helmet is safe

- o Choose a helmet that carries the Australian Standard mark. This means it is safety approved, legal and meets the Australian/New Zealand Standard AS/NZS 2063.
- o If possible, choose a helmet with Multi-Directional Impact Protection System (MIPS) technology. A MIPS helmet has a low friction layer between the helmet and the head, designed to reduce brain trauma in the event of a crash. For more information, visit www.mipsprotection.com
- o The helmet needs to be the right size and correctly fitted. See the Helmet Fit Check in this guide.
- o A helmet is designed to protect a head for one impact only. Replace it if it has been in an accident, dropped or has any damage, such as cracks in the foam or worn or frayed straps.
- o Don't wear a cap under a helmet as this can affect how the helmet fits and protects the head in an accident.

The law on bicycle helmets

It's against the law to ride without a helmet. The fine for not wearing a helmet is \$201 (as at 1 January 2019).

Other safety gear for skateboarding

Falls can be common so wrist guards and knee and elbow pads are strongly advised to reduce injuries.



Find safer places to cycle, scoot and skate

- o For younger children, the safest places to ride, scoot and skate are the backyard or a park, well away from traffic. Driveways are not safe places for play.
- o Children under 12 years of age shouldn't ride on the road. They are allowed to ride on footpaths and adults can legally ride with them.
- o Victoria has an extensive network of paths for safer cycling, scooting and skating. Many of these paths travel through parklands and are well away from roads.

Where to get more information

This guide provides broad road safety advice only. For more comprehensive information about Victorian laws regarding the use of bicycles, scooters and skateboards, visit vicroads.vic.gov.au.



Wearing a bicycle helmet

All bike and scooter riders are required to wear bike helmets in Victoria.

Mandatory bicycle helmet laws were introduced in July 1990. This applies when riding:

- on roads and road-related areas
- on bike and shared paths
- in bike lanes
- in recreational parks
- in car parks
- on footpaths.

Police can stop bike and scooter riders and issue a fine or a warning for not wearing an approved bicycle helmet.

** Parents/carers, please ensure your children are safe and wearing their helmets to and from school.



Hallam students are enjoying lots of skipping and jumping at the moment, as they participate in Jum-p Rope For Heart.... The aim of the program is to get students physically active, whilst learning about how to keep their heart healthy.

Jump Rope for Heart is a fun way for your child to be more physically active, leading them to a future of better health outcomes and reducing their risk of heart disease in adulthood. You are encouraged to ask your child to skip at home ... outside in the fresh air!! Show them some of your captivating tricksadd some music and they will thoroughly enjoy the activity...

If parents wish to participate in the fundraising, please register online... jumprope.org.au/parents.

Have a look at what Hallam Community Learning Centre has to offer for term 2 2024....

Contact details:

Katrina Lynn

Program Coordinator

Hallam Community Learning Centre Inc

56 Kays Avenue

HALLAM Vic 3803

Ph 03 9703 1688

email: program@hallamclc.com.au

www.hallamclc.com.auwww.caseyconnectlearn.com.au



HALLAM
Community Learning Centre



HALLAM

Community Learning Centre

56 Kays Avenue Hallam

PH: 9703 1688

program@hallamclc.com.au



CHILDREN'S ACTIVITIES



HALLAM

Community Learning Centre

56 Kays Avenue Hallam

PH: 9703 1688

program@hallamclc.com.au



CHILDREN'S ACTIVITIES



HALLAM

Community Learning Centre

56 Kays Avenue Hallam

PH: 9703 1688

program@hallamclc.com.au



LEARN ENGLISH



HALLAM

Community Learning Centre

56 Kays Avenue Hallam

PH: 9703 1688

program@hallamclc.com.au



LEARN ENGLISH



HALLAM

Community Learning Centre

56 Kays Avenue Hallam

PH: 9703 1688

program@hallamclc.com.au



LEARN ENGLISH PLAYGROUP



Start Term 2 Monday 15 April
 Tuesday 16 April
 Thursday 25 April
Monday 10 June
 Friday 28 June

Student Free Day
 Students commence Term 2 8:45am
 ANZAC Day Holiday
Monarch's Birthday Holiday
 End Term 2 - 2:30pm Dismissal

MAY / JUNE 2024						
MONDAY	TUESDAY	WEDNESDAY	THURSDAY	FRIDAY	SAT	SUN
20	21 Playgroup 9:00am-Hall 	22 Sticks & Stones Performance	23	24	25	26
2025 Prep-Year 6 Enrolment						
27	28 Playgroup 9:00am-Hall 	29 Divisional Cross Country	30 Newsletter	31 Chocolate Drive Starts	01 JUNE	02 JUNE
2025 Prep-Year 6 Enrolment						
03 JUNE	04 Playgroup 9:00am-Hall 	05	06 Free Dress Day Pop Stars <i>School Tour by Appointment</i>	07	08	09
2025 Prep-Year 6 Enrolment						
10 Monarch's Birthday Holiday Hallam PS Closed	11 Playgroup 9:00am-Hall 	12 Regional Cross Country OPEN AFTERNOON 3:30-4:30PM	13 Newsletter	14	15	16
2025 Prep-Year 6 Enrolment						
17	18 Playgroup 9:00am-Hall  <i>School Tour by Appointment</i>	19	20 Milk & Muffin Morning Tea <i>School Tour by Appointment</i> School Council	21 Chocolate Drive Ends	22	
2025 Prep-Year 6 Enrolment						